

## LRA-PBTA-L User Manual

### Helpful Notes

- When purchased as a kit (LRA-D1000S-L & LRA-D1000-L), the factory may program the push button to the receiver. These instructions illustrate pairing a push button with an LRA-compatible receiver. For specific instructions on operating the receiver, consult the receiver's manual.
- The push button is outdoor rated.
- The push button dimensions: 2.5" L x 1.2" W x 4.72" H
- When triggered (the center push button is pressed), the center halo will illuminate brightly for approximately 2 seconds.
- There is no limit to the number of receivers you can pair with a transmitter.
- An LRA transmitter's range (line of sight) to the receiver is 1,000 ft.

### LRA-PBTA Wireless Push Button

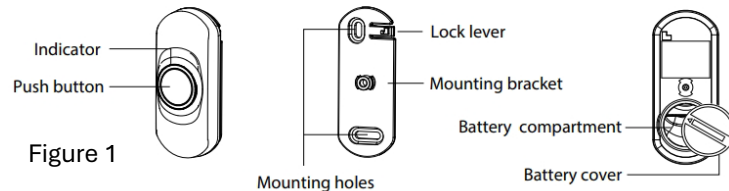


Figure 1

### Push Button Battery Installation

*\*This product contains a coin battery that could be dangerous to children. Please review the warnings at the end of this manual regarding the batteries.*

### Low Battery Indicator

During regular operation, if you notice the red LED under the strobe lens (see receiver user manual) tends to stay on after the strobe flashes, this indicates you need to change the battery in a transmitter programmed to the receiver.

### Installing/Replacing the Battery

1. Turn over the push button so the mounting plate faces you (see Figure 2).
2. Use your finger to unlock the lock lever on the back mounting plate.
3. Rotate the mounting bracket 90 degrees (parallel to the ground).
4. Separate the mounting bracket from the rest of the unit.
5. Using a coin, rotate the battery cover counterclockwise.
6. Insert a CR2032 battery into the battery compartment provided.
7. Replace battery cover. Using a coin, twist it clockwise to lock it into place.
8. Place the back mounting plate back onto the rest of the unit at a 90-degree angle.

9. Twist it clockwise until you feel the mounting plate click into place.

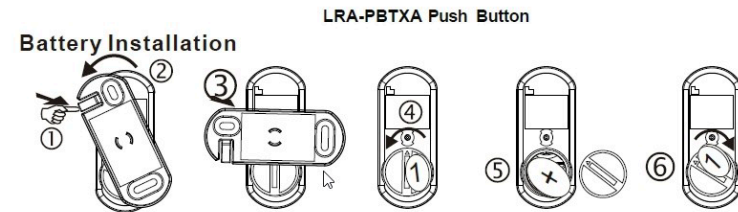


Figure 2

### Programming a Transmitter to the Receiver

*The push button may already be programmed to the receiver. Ensure the battery is installed and plug the receiver in—test by pushing the push button.*

1. Ensure the battery is installed in the LRA-PBTA-L push button and that the receiver you are programming is powered on.
2. Place the receiver in programming mode. Please consult the receiver's user manual and follow the programming steps.
3. Once the receiver is in programming mode, trigger the push button by pressing the center button. The green halo should illuminate.
4. The receiver should play a short note, signifying that the push button has been programmed to the receiver.
5. Follow the instructions on the receiver to exit programming mode.

### Mounting the Push Button

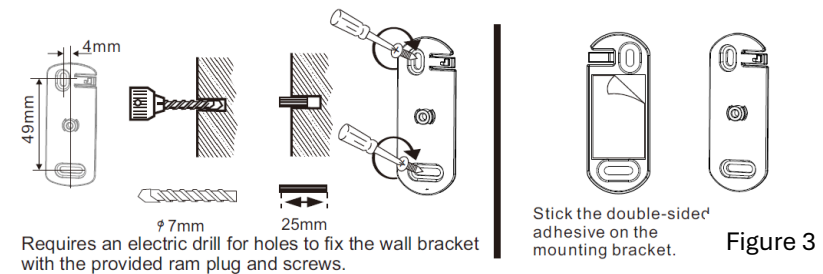


Figure 3

The push button may be mounted using the supplies mounting screws or supplied double-sided mounting tape (see Figure 3). Remove the backplate of the push button (see Figure 2) and mount it to the wall. The push button then snaps onto the mounting plate (see Figure 4).

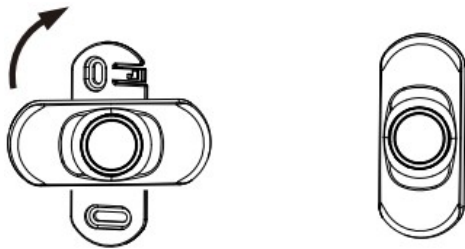


Figure 4

### Warranty

Safeguard Supply, an LHE, Inc. company, warrants this product to be free of defects in materials and workmanship for a period of one year from the date of purchase. This warranty does not cover damage resulting from accident, abuse, act of God, or improper operation. If this product does become defective, return it to Safeguard Supply. Please include a note describing the troubles along with your name and return address as well as the original sales receipt. If the product is covered under the warranty, it will be repaired or replaced at no charge. If the warranty does not cover it, you will be notified of any charges before work is done.

### Safeguard Supply

1680 Roberts Blvd. NW  
 Suite 404  
 Kennesaw, GA 30144  
 904-245-1184

### FCC Statement

This equipment complies with FCC radiation exposure limits for an uncontrolled environment. This equipment should be installed and operated with a minimum distance of 5mm between the radiator and your body. This transmitter must not be co-located or operating in conjunction with any other antenna or transmitter.

This device complies with Part 15 of the FCC Rules. Operation is subject to the following two conditions: (1) this device may not cause harmful interference, and (2) this device must accept any interference received, including interference that may cause undesired operation. Changes or modifications not expressly approved by the party responsible for compliance could void the user's authority to operate the equipment.

This equipment has been tested and found to comply with the limits for a Class B digital device, pursuant to Part 15 of the FCC Rules. These limits are designed to provide reasonable protection against harmful interference in a residential installation. This equipment generates, uses and can radiate radio frequency energy and, if not installed and used in accordance with the instructions, may cause harmful interference to radio communications. However, there is no guarantee that interference will not occur in a particular installation.

If this equipment does cause harmful interference to radio or television reception, which can be determined by turning the equipment off and on, the user is encouraged to try to correct the interference by one or more of the following measures:

- Reorient or relocate the receiving antenna. Increase the separation between the equipment and the receiver.
- Connect the equipment to an outlet on a circuit different from that to which the receiver is connected.
- Consult the dealer or an experienced radio/TV technician for help.

<b>! WARNING</b>	
<ul style="list-style-type: none"> <li>• <b>INGESTION HAZARD:</b> This product contains a button cell or coin battery.</li> <li>• <b>DEATH</b> or serious injury can occur if ingested. A swallowed button cell or coin battery can cause <b>internal Chemical Burns</b> in as little as 2 hours.</li> <li>• <b>KEEP</b> new and used batteries <b>OUT OF REACH</b> of <b>CHILDREN</b></li> <li>• <b>Seek immediate medical attention</b> if a battery is suspected to be swallowed or inserted inside any part of the body.</li> </ul>	
<p>This product may contain button cells or coin batteries, including CR1632, CR2016, CR2032, and CR2450, each with a nominal voltage of 3V.</p>	

Remove and immediately recycle or dispose of used batteries according to local regulations and keep away from children.

- DO NOT dispose of used batteries in household trash or incinerate.
- Call a local poison control center for treatment information.
- This product uses a Lithium CR2450 coin-style battery with a nominal voltage of 3V.
- Non-rechargeable batteries are not to be recharged.
- DO NOT force discharge, recharge, disassemble, heat above (manufacturer's specified temperature rating) or incinerate. Doing so may result in injury due to venting, leakage, or explosion resulting in chemical burns.
- Ensure the batteries are installed correctly according to polarity (+ and -).
- DO NOT mix old and new batteries, different brands or types or batteries, such as alkaline, carbon-zinc, or rechargeable batteries.
- Remove immediately and recycle or dispose of batteries from equipment not used for an extended period of time according to local regulations.
- Always completely secure the battery compartment. If the battery compartment does not close securely, stop using the product, remove the batteries, and keep them away from children.

